

### LYRA

Hoytek Lyra is designed for use in the ROV Drill Support, Construction, Offshore industry and Scientific industry where a powerful and flexible ROV is required.



### FEATURES

- ⊕ Down to 7000msw depth rating
- ⊕ Capable to accommodate Schilling T4 Master-Slave manipulator and any other heavy-duty manipulators
- ⊕ Capable to accommodate almost all Work Class tooling and sensors
- ⊕ Equipped with a well proven control system with built-in diagnostics and redundancy
- ⊕ Can be customized to fit all customer's requirements
- ⊕ Remote access via the internet for technical support and upgrades



### FIELD PROVEN

- ⊕ Drill Support
- ⊕ Pipeline Survey
- ⊕ Scientific Sampling
- ⊕ Exploration
- ⊕ Salvage
- ⊕ Construction



Integration Support



Remote Support



ROV Training



1 Year Warranty

## SPECIFICATIONS

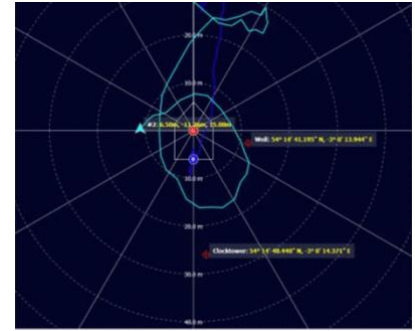
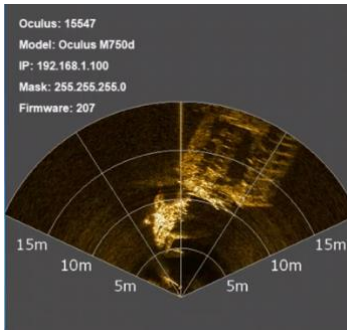
Launch Weight	3800kg
Length	2.80m
Width	1.80m
Height	1.70m
Working Depth	3000m
Payload Capacity	200kg
Forward Thrust	800kg
Vertical Thrust	700kg
Power	440VAC

Weight and payload will vary according to HPU size and depth rating.

## EQUIPMENT

4 x Vectorized Horizontal Thrusters
4 x Vertical Thrusters
Control System with 8 x RS-232 channels
Fiber system with 14xRS 232/RS 485 ch, 6xComposite video ch, 1xHD Ch, 1xGb Eth
6 x 130W LED lights
1 x Color Focus/Zoom HD Camera
1 x Low light camera
1 x Wide-angle camera
2 x CCD camera
2 x Pan/Tilt - 1 x Tilt
KVH C-100 Fluxgate Compass
Valeport VA500

Rate Gyro
Schilling T4 Manipulator
Schilling Rigmaster
Tooling HPU 75kW Dual Pump
Control Container
4 x 43" Monitors
Video Matrix System 16 ch
Options Video Overlay
Workshop Container
PDU and Surface transformer
LARS
3500m Steel Armored Umbilical



- ⊕ Auto Heading, Depth & Altitude
- ⊕ Remote Access
- ⊕ Advanced Alarm & Logging System
- ⊕ Modern & Eye-Friendly GUI
- ⊕ Multi Language Support



Integration Support



Remote Support



ROV Training



1 Year Warranty