

LYRA S

Hoytek Lyra S is a Light Work Class ROV that can perform different tasks related to marine applications such as inspection, maintenance, repair and survey.



FEATURES

- ⊕ Field proven
- ⊕ Easy to operate
- ⊕ Industrial grade design
- ⊕ Focus Zoom HD Camera
- ⊕ Lowlight Black White Camera
- ⊕ Rear Camera
- ⊕ 1100m Umbilical



High Tech Industrial Controller



Integration Support



Remote Support



ROV Training



1 Year Warranty

SPECIFICATIONS

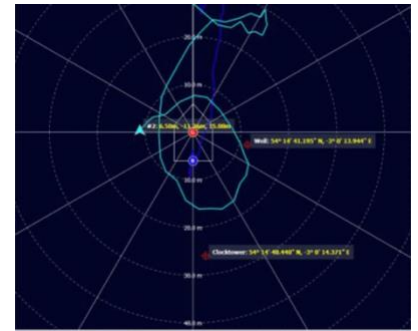
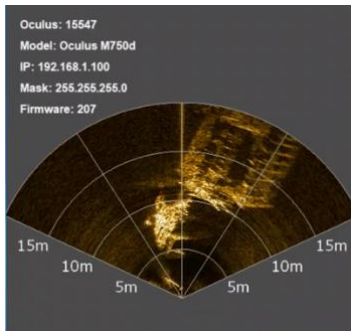
Weight	400kg
Length	1.40m
Width	1.10m
Height	0.90m
Working Depth	1000msw
Payload Capacity	30kg min.
Forward Thrust	90kgf
Vertical Thrust	60kgf
Power	15kW

EQUIPMENT

1 x F/Z HD Camera
2 x Utility Cameras
4 x 25000lumen LED Lights
Hoytek Sensor (AHRS + Depth)
Pan Tilt Unit
Single or Multibeam Sonar
1100m Cable Winch
Control Console with 4 Monitors
Transformator and PDU

OPTIONAL EQUIPMENT

Altimeter
4/5 axis Hydro-Lek Manipulator
5 axis Electrical Manipulator
USBL
Flasher/Pinger
Wide range of equipment and sensors according to customer's needs!



- ⊕ Auto Heading, Depth & Altitude
- ⊕ Remote Access
- ⊕ Advanced Alarm & Logging System
- ⊕ Modern & Eye-Friendly GUI
- ⊕ Multi Language Support



Integration Support



Remote Support



ROV Training



1 Year Warranty