

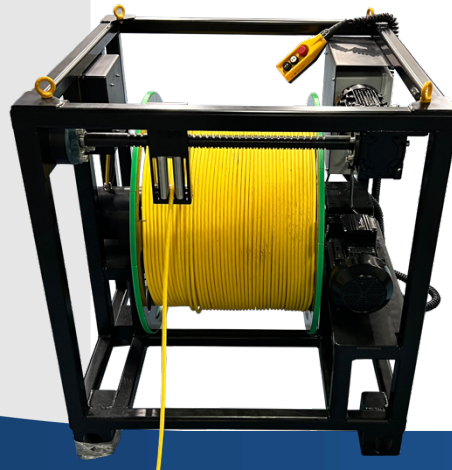
## MYRA

Myra can perform different tasks related to marine applications such as observation, light-work and inspection with its highly stable 6 thruster system and 5-axis manipulator.



## FEATURES

- ⊕ Field proven
- ⊕ Easy to launch & recover
- ⊕ Easy to operate
- ⊕ Industrial grade design
- ⊕ Crystal clear FHD video
- ⊕ 600msw rated
- ⊕ Wide range of optional sensors
- ⊕ Cable winch



Integration Support



Remote Support



ROV Training



1 Year Warranty

## SPECIFICATIONS

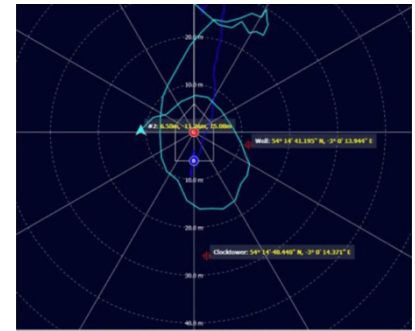
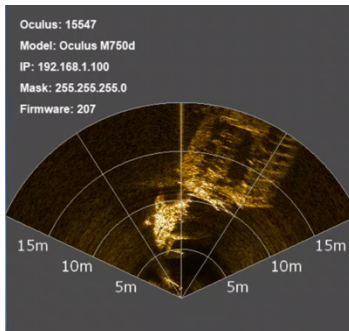
|                  |          |
|------------------|----------|
| Weight           | 165kg    |
| Length           | 1.10m    |
| Width            | 0.75m    |
| Height           | 0.77m    |
| Working Depth    | 600msw   |
| Payload Capacity | 25kg     |
| Forward Speed    | 3.5knots |
| Vertical Speed   | 2knots   |

## EQUIPMENT

|                                     |
|-------------------------------------|
| 4 x Vectorized Horizontal Thrusters |
| 2 x Vertical Thrusters              |
| FHD Color Camera                    |
| 2 x 6000lumen LED Lights            |
| Hoytek Sensor (AHRS + Depth)        |
| Cable Reel (330m cable)             |
| High Resolution Imaging Sonar       |
| Fiber Optic Comms System            |
| Tilt for Camera                     |

## OPTIONAL EQUIPMENT

|  |
|--|
| Electric Winch with Drum   |
| LARS with Electric Drum  |
| Altimeter  |
| USBL   |
| 5 axis Electrical Manipulator                                      |
| Wide range of equipment and sensors according to customer's needs! |



- ⊕ Auto Heading, Depth & Altitude
- ⊕ Remote Access
- ⊕ Advanced Alarm & Logging System
- ⊕ Modern & Eye-Friendly GUI
- ⊕ Multi Language Support



Integration Support



Remote Support



ROV Training



1 Year Warranty