

MYRA

Myra can perform different tasks related to marine applications such as observation, light-work and inspection with its highly stable 6 thruster system and 5-axis manipulator.



FEATURES

- ⊕ Field proven
- ⊕ Easy to launch & recover
- ⊕ Easy to operate
- ⊕ Industrial grade design
- ⊕ Crystal clear FHD video
- ⊕ 600msw rated
- ⊕ Wide range of optional sensors
- ⊕ Cable winch



Industrial Control Case



Industrial Controller



Integration Support



Remote Support



ROV Training



1 Year Warranty

SPECIFICATIONS

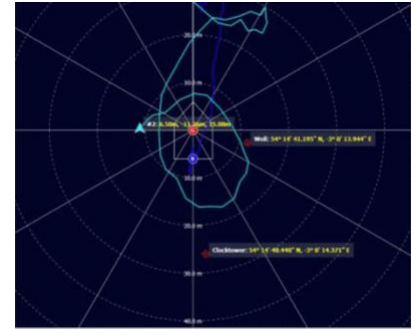
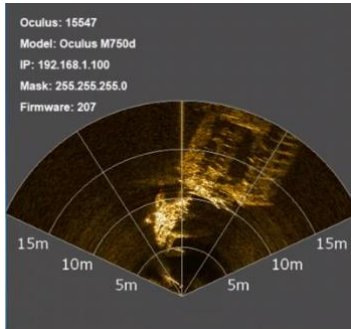
Weight	120kg
Length	1.10m
Width	0.68m
Height	0.82m
Working Depth	600msw
Payload Capacity	25kg
Forward Speed	3.5knots
Vertical Speed	2knots

EQUIPMENT

4 x Vectorized Horizontal Thrusters
2 x Vertical Thrusters
FHD Color Camera
3 x 6000lumen LED Lights
Hoytek Sensor (AHRS + Depth)
Cable Reel (330m cable)
High Resolution Imaging Sonar
Fiber Optic Comms System
Tilt for Camera

OPTIONAL EQUIPMENT

Electric Winch with Drum
LARS with Electric Drum
Altimeter
USBL
5 axis Electrical Manipulator
Wide range of equipment and sensors according to customer's needs!



- ⊕ Auto Heading, Depth & Altitude
- ⊕ Remote Access
- ⊕ Advanced Alarm & Logging System
- ⊕ Modern & Eye-Friendly GUI
- ⊕ Multi Language Support



Integration Support



Remote Support



ROV Training



1 Year Warranty