



DEMRE

Demre is a 300msw rated industrial grade observation class mini ROV and it's the strongest and the most capable underwater electric robotic system in its class.

FEATURES

- ⊕ Field proven
- ⊕ Easy to launch & recover
- ⊕ Easy to operate
- ⊕ Industrial grade design
- ⊕ Crystal clear FHD video
- ⊕ The most cost effective ROV in its class
- ⊕ 300msw depth rated
- ⊕ Oil-filled thrusters with compensators



FIELD PROVEN

- ⊕ Scientific Research
- ⊕ Search and Rescue
- ⊕ Offshore
- ⊕ Military Operations
- ⊕ Fish Farms



Dual Screen Control

Tether Case with Levelwinder



Industrial Controller



Integration Support



Remote Support



ROV Training



1 Year Warranty

SPECIFICATIONS

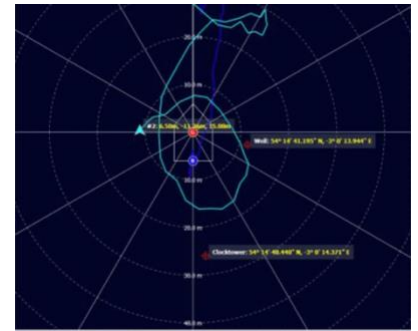
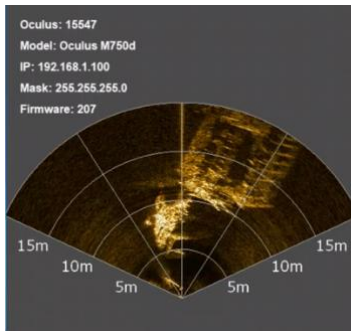
Weight	40kg
Length	0.78m
Width	0.60m
Height	0.41m
Working Depth	300msw
Payload Capacity	5kg
Forward Thrust	18kgf
Vertical Thrust	13kgf
Power	230VAC

EQUIPMENT

4 x Vectorized Horizontal Thrusters
2 x Vertical Thrusters
FHD Color Camera
2 x 6000lumen LED Lights
Hoytek Sensor (AHRS + Depth)
2 x Oil Compansator
Dual Screen Control Case
Hand Controller
Tether Reel Case with Levelwinder

OPTIONAL EQUIPMENT

Multibeam Imaging Sonar
Grabber
3 or 5 Function Manipulator
Tilt for Camera and LED Lights
Rear Fisheye Camera
USB/L
Altimeter
Flasher/Pinger
Generator (4kVA)



- ⊕ Auto Heading, Depth & Altitude
- ⊕ Remote Access
- ⊕ Advanced Alarm & Logging System
- ⊕ Modern & Eye-Friendly GUI
- ⊕ Multi Language Support



Integration Support



Remote Support



ROV Training



1 Year Warranty